

CARGO CARRYING LOGISTIC SOLUTIONS FOR THE 21ST CENTURY OILFIELD

Rental, Consignment, Lease Programs plus Purchase of Standard or Custom Built Cargo Carrying Units

KEY BENEFITS

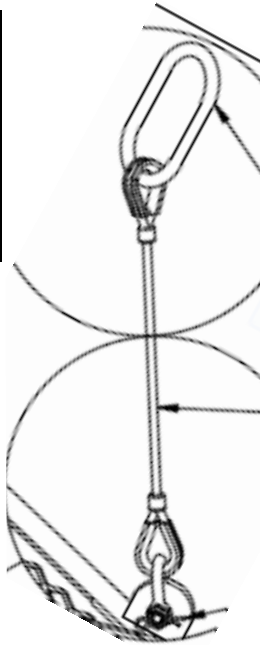
Paragon Engineers its products to be the Industry's Toughest. All designs go through a rigorous material, structural, functional and life analysis to ensure that our customers receive products that fit their needs.

KEY FEATURES

Paragon designs its wide range of equipment to ensure that the highest quality and safety standards are met and adhered to.

Through the use of Professional and Experienced Engineering Principles and Practices., Paragon is able to back up its products to meet or exceed all Industry standards and testing requirements., with full documentation and certification backup.

- Fully engineered to meet or exceed API RP 2A standards, load and safety factors.
- Paragon is ISO 9001:2008 Certified
- Shell Exploration and Production Co (SEPCo) Compliant
- Configurations could be designed to meet all BHP or DNV-2.7-1 standards
- All products are designed to Professional Engineering standards and certifications.
- Each unit goes through its relative load or pull testing for strength or wear testing for cracks or fatigue on a scheduled basis over the life of the unit and rigging.



Shell Exploration and Production Company (SEPCo)
Lifted Equipment Certification Form

Shell Purchased: _____ Supplier: Paragon
Rental Equipment: _____ Owner (Vendor): Paragon

Description of Equipment: 93' x 56' x 64.25'H Tote Tank Transporter - SRC Job # 08-1871 (Doc # 108-737)

Tare Weight (lbs): 2,500 Lbs.
(Empty weight or container, tank, package, skid)

Working Load Limit (lbs): 10,500 Lbs.
(Weight of Liquid in tank, items in container, etc.)


Maximum Gross Weight (lbs): 13,000 Lbs.
(Tare Weight + Working Load Limit = Max Gross Weight)

Floor Area Loading (psf): 281 PSF
(allowable floor area loading for containers or buildings)

Unique Identification Number: ?????
(For rental equipment only)

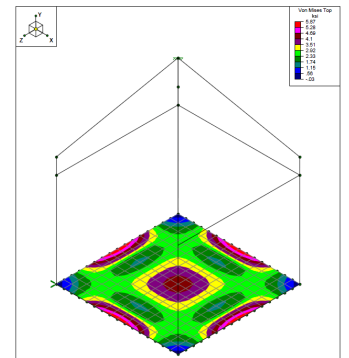
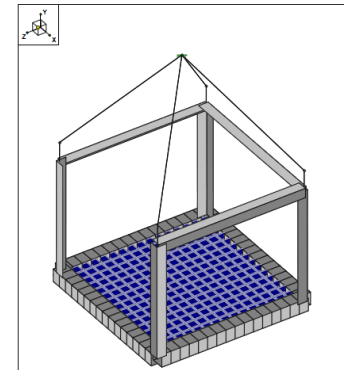
I certify that the above-described lifted equipment is designed for offshore dynamic lifting in accordance with the provisions of API RP2A (latest edition) and SEPCo Document OPS0055 (latest edition).

Registered Professional Engineer _____ Date: October 17, 2008



Notes:
1. Owners of rental equipment shall keep a copy of this form on file for duration of equipment life and shall submit a copy to SME upon request.
2. ISO Markers/Connectors are not permitted to be used as lifting attachment points.

Shell Lifting Cert - Paragon - Tote Tank Transporter - SRC 08-1871



Analysis results are as follows:

Load Case	Calculated Results	Allowable Limits	
Load Case 1: Lifting Load Case Applied Transporter and Contents Load (2.8:1) DLF	Maximum Unity Check	→ 0.961	1
	Maximum Member Deflection	→ 0.107	30,000 psi
	Maximum Bending Stress	→ 20,117 psi	30,000 psi
	Maximum Plate Stress	→ 11,724 psi	30,000 psi
Load Case 2: Fork Lift Load Case Applied Transporter and Contents Load (1.6:1) DLF	Maximum Unity Check	→ 0.620	1
	Maximum Member Deflection	→ 0.253"	30,000 psi
	Maximum Bending Stress	→ 16,261 psi	30,000 psi
	Maximum Plate Stress	→ 750 psi	30,000 psi
Load Case 3: Vertical Impact 1 Load Case	Maximum Unity Check	→ 0.382	1
	Maximum Member Deflection	→ 0.299"	0.38"
	Maximum Bending Stress	→ 8,044 psi	36,000 psi
	Maximum Plate Stress	→ 4,680 psi	36,000 psi
Load Case 4: Vertical Impact 2 Load Case	Maximum Unity Check	→ 0.399	1
	Maximum Member Deflection	→ 0.271"	0.38"
	Maximum Bending Stress	→ 8,957 psi	36,000 psi
	Maximum Plate Stress	→ 4,768 psi	36,000 psi
Load Case 5: Vertical Impact 3 Load Case	Maximum Unity Check	→ 0.387	1
	Maximum Member Deflection	→ 0.252"	0.703"
	Maximum Bending Stress	→ 7,265 psi	36,000 psi
	Maximum Plate Stress	→ 4,930 psi	36,000 psi
Load Case 6: Horizontal Impact 1 Load Case	Maximum Unity Check	→ 0.526	1
	Maximum Member Deflection	→ 0.281"	0.38"
	Maximum Bending Stress	→ 8,947 psi	30,000 psi
	Maximum Plate Stress	→ 4,600 psi	30,000 psi
Load Case 7: Horizontal Impact 2 Load Case	Maximum Unity Check	→ 0.392	1
	Maximum Member Deflection	→ 0.281"	0.38"
	Maximum Bending Stress	→ 8,047 psi	30,000 psi
	Maximum Plate Stress	→ 4,600 psi	30,000 psi
Load Case 8: Horizontal Impact 3 Load Case	Maximum Unity Check	→ 0.392	1
	Maximum Member Deflection	→ 0.281"	0.38"
	Maximum Bending Stress	→ 8,047 psi	30,000 psi
	Maximum Plate Stress	→ 4,600 psi	30,000 psi

